



Enterprise Device Manager

Enterprise Device Manager is an enterprise-level device monitoring, control and asset management application. Web-based, it allows users to monitor and control hundreds or even thousands of devices from a single console.

Its simple intuitive layout provides a real-world and real-time representation of global infrastructure, with drill-down functionality to identify and manage alerts down to the individual product at a "U" position within a rack.



Top level view: status



Building view: humidity

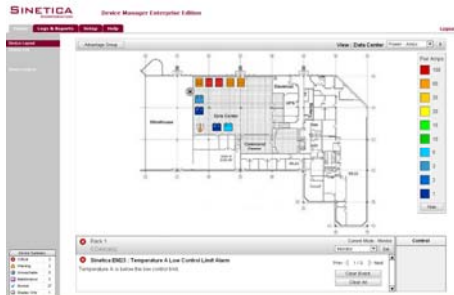
Key Features

- **Secure & easy to use**
- **Multi-protocol support (inc SNMP)**
- **SNMP traps sent to multiple receivers when events occur**
The status of the infrastructure can be viewed from any browser on the company intranet. This includes the power, temperature and humidity of each individual device and all other monitored elements, such as door sensors, Key Pad access and remotely controlled electronic cabinet doors.
- **Intelligent alarm processing**
Only active alarms are displayed, then automatically removed from the alarm view without the need for manual input, but can be escalated if unresolved after a set period of time. All alarms are saved to a log file for trend analysis and reporting.
- **Centralised configuration**
The hierarchy can be configured to match customer requirements to group devices by location, type or function. Support for nested groups allows you to design a topology that fits your needs.
- **Customised layouts & extensive reporting via ODBC**
Extensive reporting provides summary and detailed event logs, inventory reports and device parameters. Custom reports can be saved, and recurring reports can be configured to be sent automatically by email. Colour-coded views present power, temperature, humidity and alarms. Layouts can be customised with device icons of a size and position of customer choosing, and background images can be imported for full and individual customisation.
- **Real-time monitoring with Macromedia Flash, without the need for screen refresh**
- **Automatically discovers supported devices, e.g. SNMP, UPS software, Web servers, Telnet devices**
- **Broadcast, email & pager notification options**

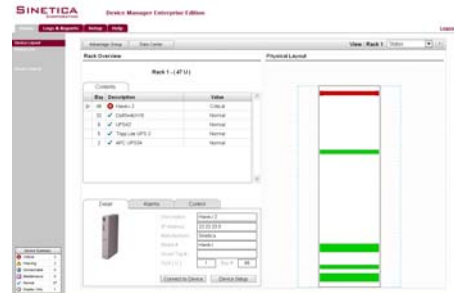


Comrac Limited
Company Number: 2587734
Registered Address: Comrac House, Tournament Way,
Ashby de la Zouch, Leicestershire, LE65 2UU, UK
Tel: +44 (0)1530 560880 Fax: +44 (0)1530 560590
Email: sales@comrac.co.uk www.comrac.co.uk www.unitetp.co.uk





Data Centre view: power



Rack view: status

Technical Information

Operating Systems Supported	Windows 2000 (service pack 4 or higher) Windows XP Professional (service Pack 1 or higher) Windows 2003 Server Enterprise Edition
Web Browsers Supported	Internet Explorer 6.0 (Service Pack 1) Macromedia Flash 7.0
Database	MSDE 2000 (Service Pack 3) – included with the software



Comrac Limited
Company Number: 2587734
Registered Address: Comrac House, Tournament Way,
Ashby de la Zouch, Leicestershire, LE65 2UU, UK
Tel: +44 (0)1530 560880 Fax: +44 (0)1530 560590
Email: sales@comrac.co.uk www.comrac.co.uk www.unitetp.co.uk



July 2007